

WAYNE GARDENS



November 2022

Fresh Express Reminder

November's Fresh Express is Tuesday, November 15th at 10am. December's Fresh Express is Tuesday, December 13th at 10am. January is planned to return to the last Tuesday of the month.



What's Inside

Wayne Gardens Events

Birthdays

Resources

Notices & Closures

Dates to Remember & Contact Info

Word Search



Wayne Gardens Events



Fresh Express

Fresh Express is a food program that is offered through Central PA Food Bank in Harrisburg. This is an in person food selection event held at the Valley Terrace Community Center on usually the last Tuesday of the month. November and December did have date changes however, due to the holidays. **November Fresh express will be Tuesday, November 15th at 10.** Residents bring bags and make food selections from items provided by the Central PA Foodbank. Usually there is a protein, eggs, fresh produce and dry goods. If you are new to Fresh Express and would like to enroll contact Lydia.

We often have a few leftovers from Fresh Express. These we put in the Wayne Garden's Community room. They are for anyone to take who can use.

Senior boxes (CSFP & Eldershare) with additional shelf-stable items are also available for those who meet eligibility income levels You must enroll ahead of time for these programs and commit to picking up your box every month. If interested schedule a time with Lydia to enroll.

Important: Date & Time Changes for Fresh Express for months of November and December

The Central PA Foodbank has requested a distribution date and time change for the months of November and December. See Below:

November Fresh Express– Tuesday, November 15th. Wayne Gardens residents may come at 10am

December Fresh Express– Tuesday, December 13th. Wayne Gardens residents may come at 10 am



BINGO

BINGO will resume in January



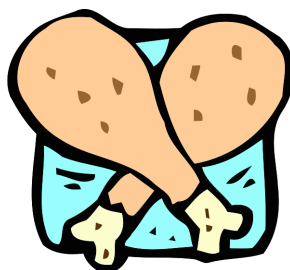
Bookmobile Info

The bookmobile stops between the two Wayne Garden buildings the third Monday of the month between 10am-10:30am and does have a lift for those who may need it. Happy Reading!



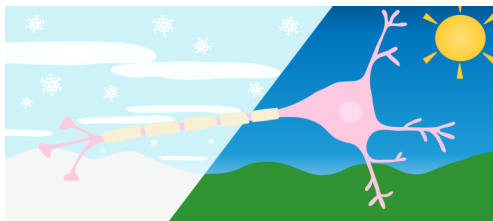
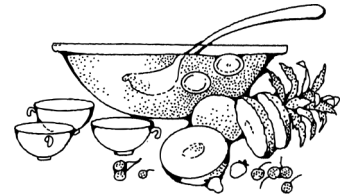
Free Meals Brought To You by Restoration Church and Be The Village

Restoration Church of Waynesboro delivers homemade free meals on usually the last Monday of the month to the Wayne Gardens Community Room from 5:20-5:45 for either pickup or to eat at a table in the Wayne Gardens Community Room. November they will be out on the 28th. Please RSVP by the Thursday before the meal using the sign up sheet if you would like a meal to ensure there are enough. You also have the option of being added to a list to receive a meal every month. If you do that just let Lydia know and then you do not need to RSVP each month.



Paint & Sip Reminder

If you signed up for the Paint & Sip it will be Monday, November 14th at 1:30 pm. We'll have some booze-free beverages and make some art! This event does required that you rsvp'd ahead of time. If you can't remember if you signed up or not contact Lydia and she can let you know. If you need to cancel please let Lydia know. Thank you.



SAD (Seasonal Affective Disorder) Talk by Martha Swope

Winter is coming and with it some people will experience SAD. Learn what SAD is and how to prevent/treat it at our next talk with Franklin Fulton County psychiatric nurse Martha Swope! Wednesday, December 14th at 1pm.

Resources & Info

Medicare Open Enrollment Counseling

Medicare open enrollment is October 15th-December 7th. During this period each year Medicare beneficiaries can join, switch or drop their Medicare Part D or Medicare Advantage Coverage. Medicare Part D and Medicare Advantage plans change the coverage costs each year so it is important to review your plan and compare it to others on the market that are available to Franklin County residents.

There will be health counselors available during open Annual Open Enrollment Period to help you understand your options in comparing Part D and Medicare Advantage plans. This counseling program was previously known as APPRISE but is now renamed PE MEDI. **Scheduling for free Medicare counseling appointments will be open soon. The Franklin County Office on Aging has opened scheduling appointments. To schedule call PA MEDI-Franklin County Area Agency on Aging at 717-263-2153**



Produce in Wayne Gardens Refrigerator

Lydia is currently picking up produce from The Gleaning Project in Chambersburg and stocking the Wayne Gardens refrigerator with it late Wednesday or Thursday afternoons. Any resident is welcome to take what they can use.

Lydia also makes an effort to add items after Fresh Express on the last Tuesday of the month for participants that could not carry everything they wanted or were not able to attend in person



LIHEAP Heating Assistance Open

LIHEAP is a federally funded program administered by DHS that provides assistance for home heating bills, so low-income Pennsylvanians can stay warm and safe during the winter months.

LIHEAP is distributed directly to a household's utility company or home heating fuel provider in the form of a grant, so the individual or households do not have to repay assistance.

Maximum income levels to qualify are 20,385 for 1 person household, 27,465 for 2 people There are two initial ways to apply for LIHEAP*

Online: Apply for benefits online using COMPASS, the online tool for Pennsylvanians to apply for health and human service programs and manage benefit information. You will need an email address.

By paper: You can download a paper application, print it, fill it out, and return it to your local county assistance office which for Franklin County is:

Franklin County Assistance Office

620 Norland Avenue

Chambersburg, PA 17201

Your SSC Lydia can provide you with an application and help you apply. Call her at 717-977-3900 ext 112 to schedule an appointment.

Notices

Maintenance Time of Entry of Premises

Beginning in October maintenance will be able to enter units as early as 8am for work orders, inspections or other issues. This is an earlier time than it had been to ensure that all maintenance issues can be addressed in a timely manner.



Heating Odors

Residents may notice a burning or “hot” odor when first running heat. This is typical and does not require a work order unless the smell is persistent and lasts longer than an hour.





Waynesboro Senior Center to Move to New Location

On Monday, October 31st the Waynesboro Senior Center opened their doors at their new location:

11359 Anthony Hwy,

Waynesboro, PA 17268

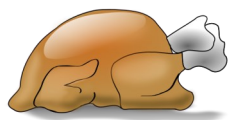
Some of you may know this building as the “Old Henicle’s Market”. It is less than 1 mile from the current Waynesboro Senior Center and will provide the opportunity for more activities. Some activities the senior center has in mind are: exercise equipment, puzzle & gaming area, craft areas, coffee bar and a library.

The senior center plan (though it may be flexible) is to close the center on Thursday & Friday, Oct 27th & 28th but still provide meal options both days and then re-open at the new location on October 31st.

.....

Wellspan Community Health Worker Meeting By Appointment

Ashley Corradino, the Wellspan Community Health Worker that was onsite is going remote due to lack of utilization. If you need help with communicating with your doctor over appointments, test results, concerns and other matters Ashley can assist. Ashley can also help with filling out applications for assistance. **You can reach Ashley at 717-264-0081.** Leave a message and Ashley will call you back and schedule an appointment. (If you try to contact Ashley and do not receive a return call please let Lydia know and she can assist you with reaching her)



Roasting Chickens & Christmas Food Boxes Available from WCHS

Waynesboro Community and Human Services is providing roasting chickens/turkeys for Thanksgiving and boxes of ingredients for Christmas meal prep for those who meet income eligibility (25,141.40 per 1 person and 33,873.5 per 2 person household). Call 717-762-6941 to reserve a turkey for Thanksgiving and/or a Christmas ingredient box. The deadline to register for the turkey is November 16th. Pickup of the turkey will be curbside on November 18th from 9-12 and the December box pickup will be December 16th.





Maintenance calls—

When calling in a work order, please speak clearly/slowly and provide: name, address (development name), and issue. Maintenance will usually only return your call if it is an emergency work order call made after hours—however, if your phone blocks unknown calls they will not be able to reach you if they have questions. Please remove this feature after calling in your workorder particularly if it is after hours. Please be aware that usually maintenance does not return calls for work orders that are non-emergency nor for emergency calls during regular hours unless they need more information. They do return calls for emergency after hour work orders.

Examples of emergencies are (but not limited to):

Plumbing leaks which could flood the unit or cause damage; Electrical hazards; No heat; Clogged toilet or clogged tub, if on a weekend and have no second tub and/or toilet; and completely clogged kitchen sink.

All other work orders will be handled as time permits. Changing light bulbs, etc. is not considered an emergency—no power or flooding is

Dates to Remember

11/14— Paint & Sip

11/15— Fresh Express

11/28— Restoration Church Meal

12/13— December Fresh Express

12/14— SAD Martha Swope Talk

12/20— Tentative date for Wayne Gardens Holiday Meal

Contact Information:

Call 717-977-3900

Patty Phillips (Temporary Management) Ext:111 or email

pphillips@luminest.org

Lydia Frech (Supportive Services) Ext 112 or email at
lfrech@luminest.org



When mailing payments please use our office address:

Luminest

82 W. Queen Street

Chambersburg, PA 17201

717-977-3900

www.luminest.org